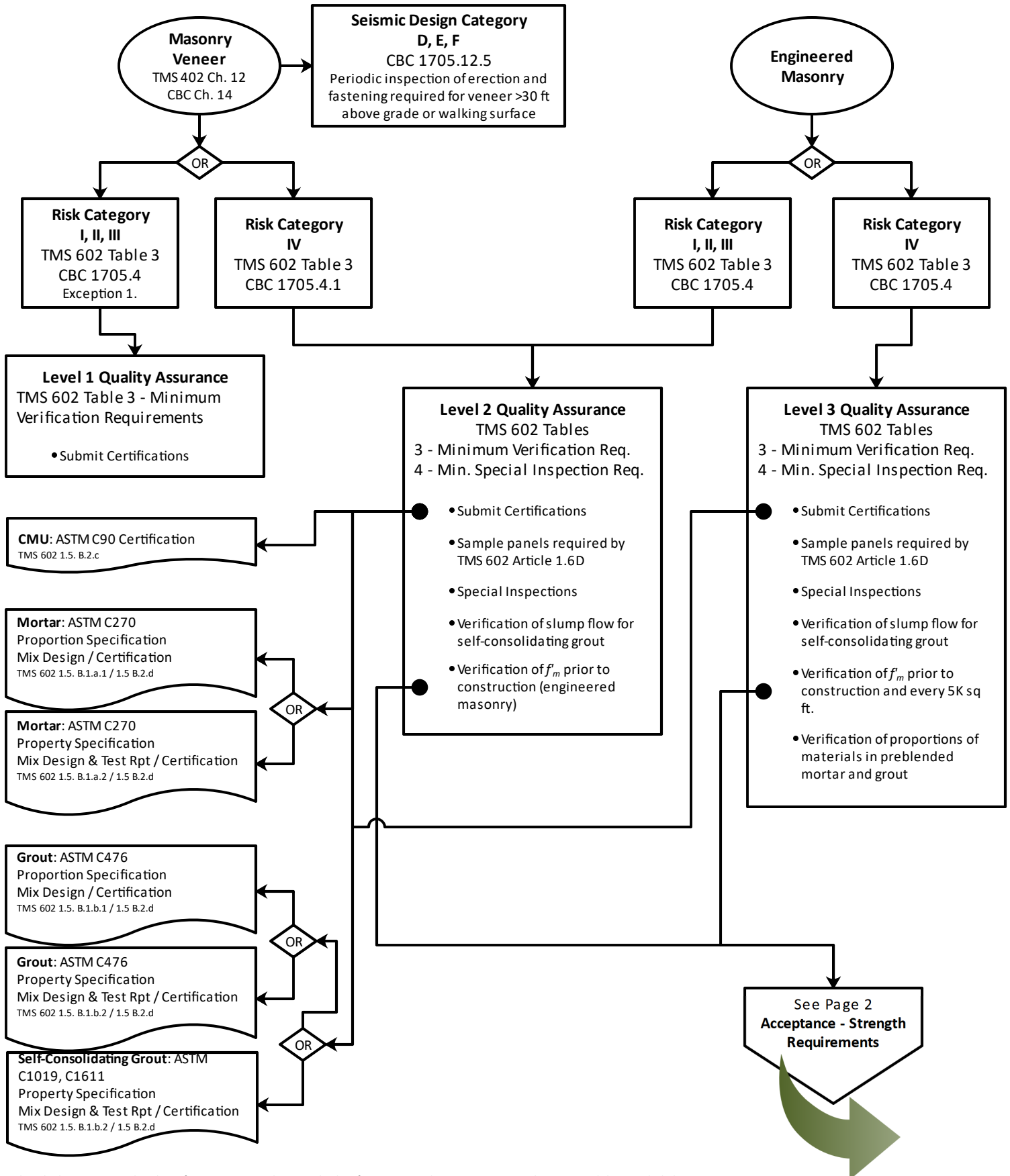


**Quality Assurance - Masonry Material Submittals and Testing**

**CBC: 2019 California Building Code**

**TMS 402: 2016 Building Code Requirements for Masonry Structures and Commentary**

**TMS 602: 2016 Specification for Masonry Structures and Commentary**

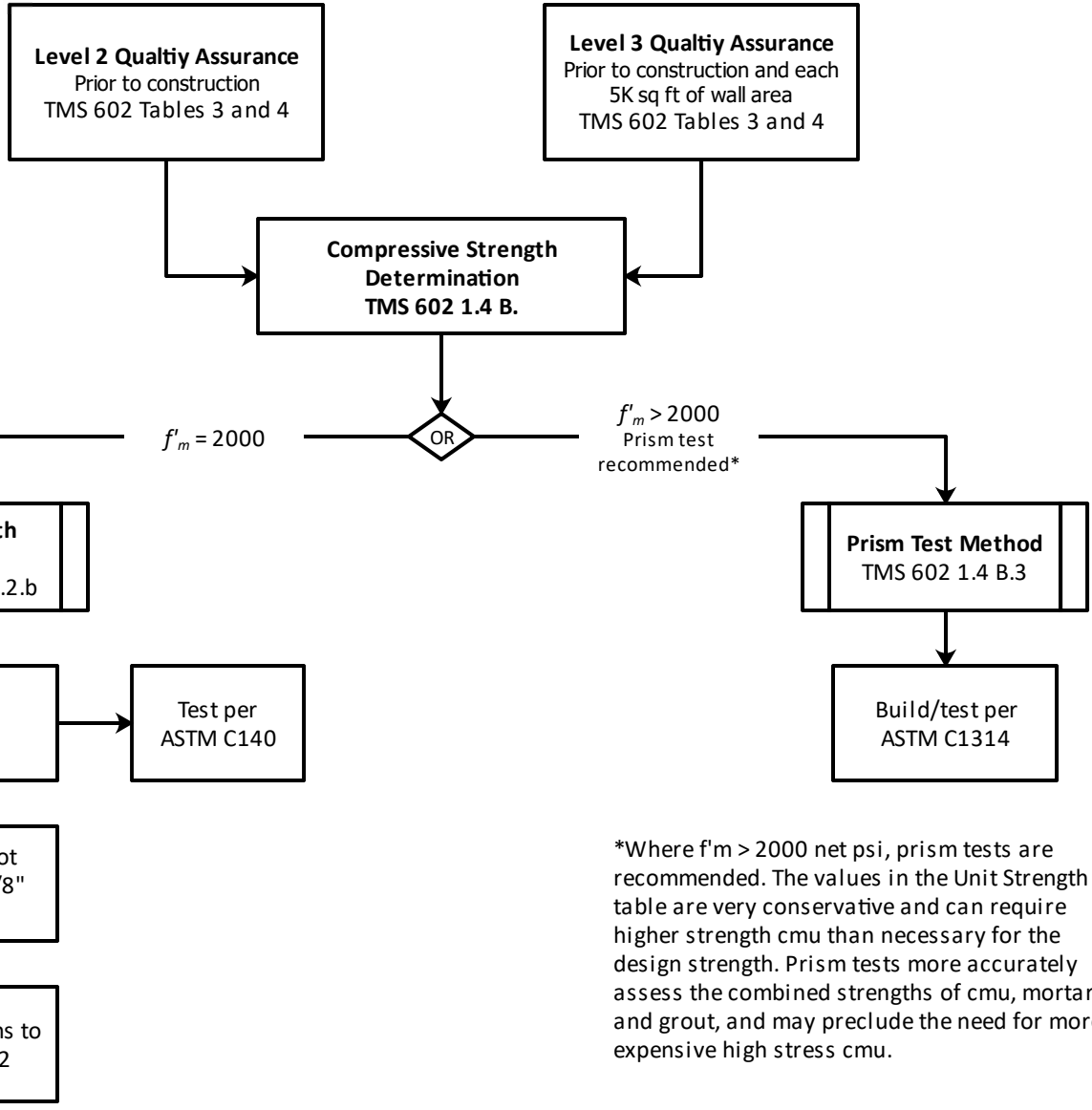
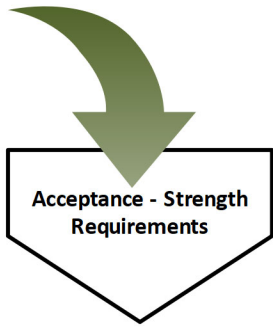


# Quality Assurance - Masonry Material Submittals and Testing

CBC: 2019 California Building Code

TMS 402: 2016 Building Code Requirements for Masonry Structures and Commentary

TMS 602: 2016 Specification for Masonry Structures and Commentary



\*Where  $f'_m > 2000$  net psi, prism tests are recommended. The values in the Unit Strength table are very conservative and can require higher strength cmu than necessary for the design strength. Prism tests more accurately assess the combined strengths of cmu, mortar, and grout, and may preclude the need for more expensive high stress cmu.

**NOTE: 2019 CBC Chapter 21 also contains sections related to quality assurance that are specific to OSHPD 1R, 2 and 5, and DSA-SS/CC. Those references are not included here. As they have similarities to DSA and OSPHD requirements in Chapter 21A, they are included in Quality Assurance 2019 CBC-DSA.**