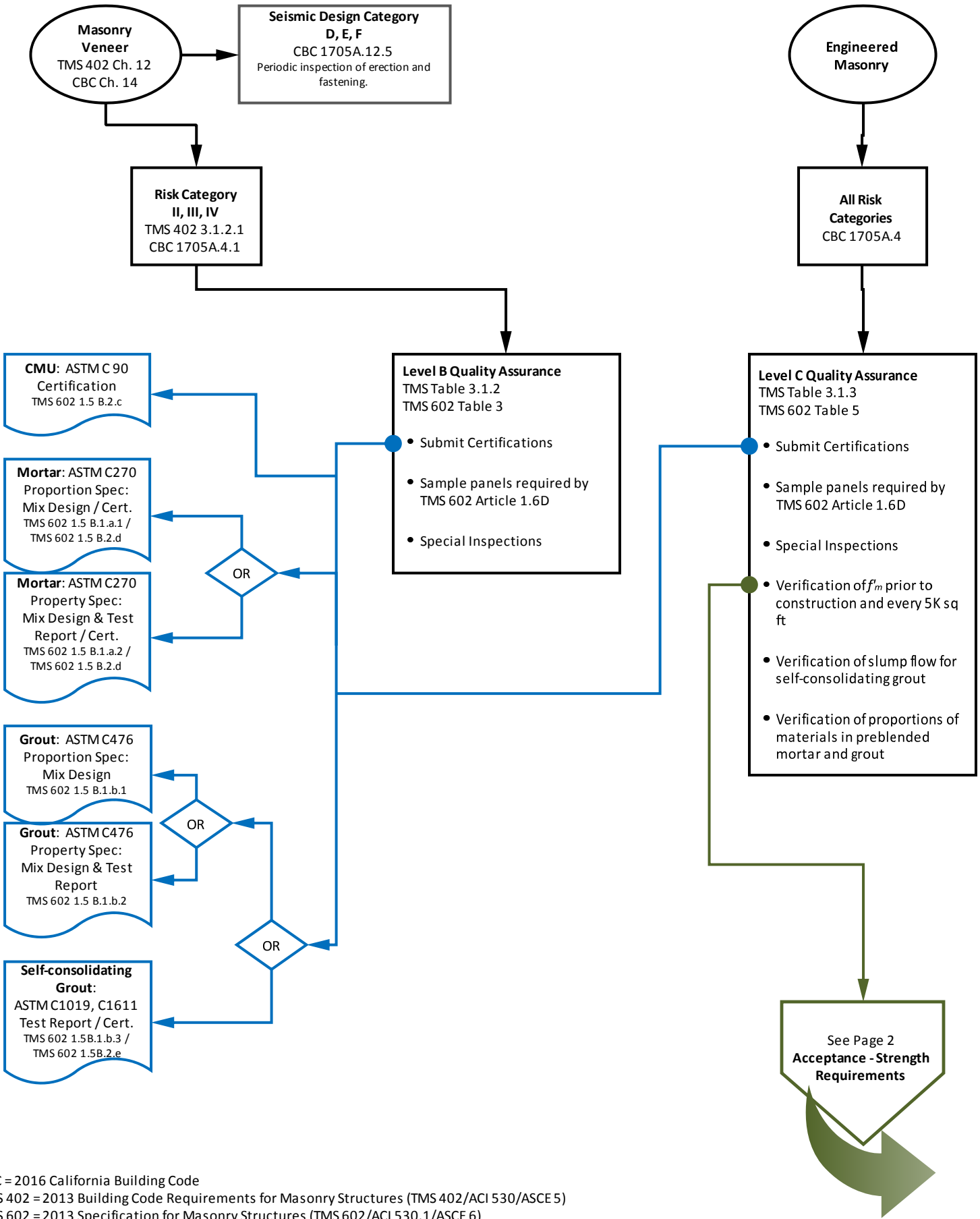


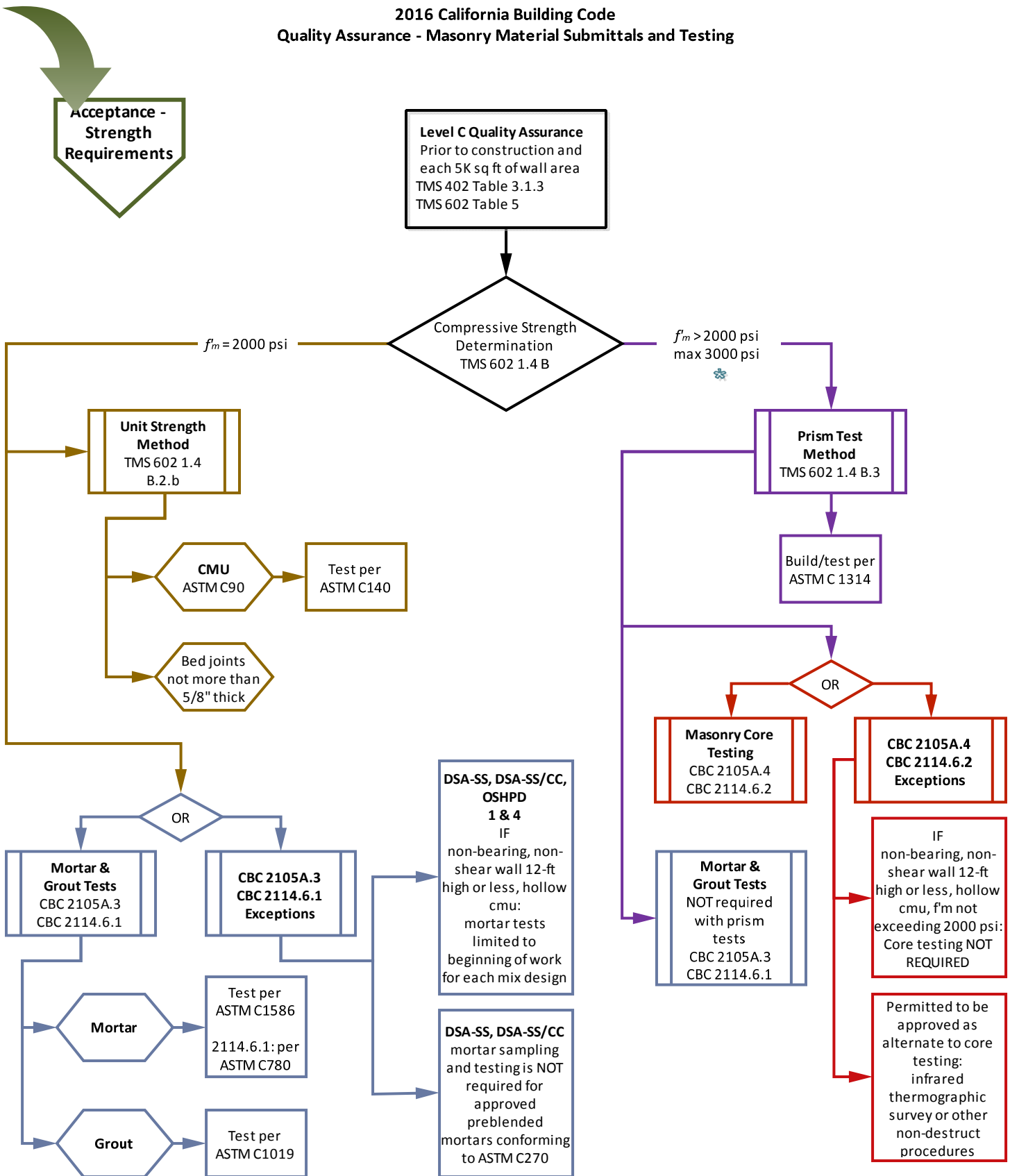
**2016 California Building Code  
Quality Assurance - Masonry Material Submittals and Testing  
(DSA-SS, DSA-SS/CC, OSHPD 1&4)**



CBC = 2016 California Building Code  
 TMS 402 = 2013 Building Code Requirements for Masonry Structures (TMS 402/ACI 530/ASCE 5)  
 TMS 602 = 2013 Specification for Masonry Structures (TMS 602/ACI 530.1/ASCE 6)

Angelus Block Co., Inc. supplies this information as an educational aid. References to code sections are not exhaustive, and those included herein are intended only to introduce the user to general concepts and examples of code treatment of this topic. It is the responsibility of the user to obtain engineering or other advisory services from licensed professionals as the basis for incorporating into any project any information, detail, or product offered herein.

**2016 California Building Code  
Quality Assurance - Masonry Material Submittals and Testing**



✪ Where  $f'_m > 2000$  net psi, prism tests are mandatory.

CBC = 2016 California Building Code  
 TMS 402 = 2013 Building Code Requirements for Masonry Structures (TMS 402/ACI 530/ASCE 5)  
 TMS 602 = 2013 Specification for Masonry Structures (TMS 602/ACI 530.1/ASCE 6)

Angelus Block Co., Inc. supplies this information as an educational aid. References to code sections are not exhaustive, and those included herein are intended only to introduce the user to general concepts and examples of code treatment of this topic. It is the responsibility of the user to obtain engineering or other advisory services from licensed professionals as the basis for incorporating into any project any information, detail, or product offered herein.